

**Notes on some North
American *Callimomidae* (Hym. Chalc.)**
(*Callimomid Studies 3.*)

by
E. B. Hoffmeyer.

1. *Callimome texanum* n. sp. Fig. 1, 2.

♀. Head and thorax blue, face with brassy tinge, vertex and thorax violaceous and greenish shining. Eyes red. Antennæ with scape yellow beneath, flagellum dark brown. Thorax coarsely punctured, scutellum with a distinct cross furrow, behind which it is very finely sculptured. Wings hyaline, the veins

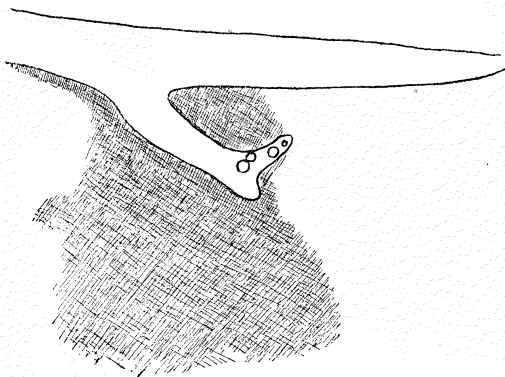


Fig. 1. *Callimome texanum* n. sp. ♀ Radial vein.

light brown, the radial vein surrounded by a cloud, which is reaching $\frac{1}{4}$ of the breadth of the wing. Femora violaceous, knees, tibiæ, and tarsi of the two first pairs of legs yellow, hind tibiæ brownish in the middle, hind tarsi whitish. Hind femora serrate, with a distinct tooth. Abdomen violaceous,

with purple tinge on the 4th and 5th segments. Ovipositor $\frac{2}{3}$ longer than the body. Length of body 3,2—3,8 mm, length of ovipositor 5,0—6,2 mm. Ovipositor: hind femur = 4,7—5,8.

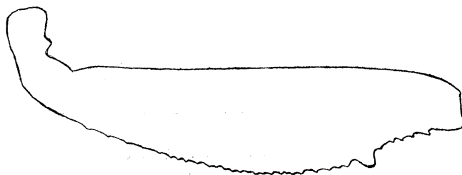


Fig. 2 *Callinome texanum* n. sp. ♀ Hind femur.

♂. Similar to the ♀, the cloud of the fore wings generally smaller, and the hind tibiae metallic. Length of body 2,8—3,2 mm.

Type locality: St. Rita Mts., Arizona.

Host: *Cynips howardiana* Kinsey in litt., possibly *C. plumbea* Weld, on *Quercus oblongifolia*.

Type: U. S. Nat. Mus. No. 41764.

It is closely allied to *C. fullawayi* Huber, but easily distinguished by the color, which is blue and violaceous, while in *fullawayi* it is generally green, and in the length of the ovipositor. The size of the tooth on the hind femur is equal on all the specimens of my collection, while Mr. A. B. Gahan has stated to me, that in *fullawayi* it is quite variable in size, ranging from very distinct to quite absent in some females and almost lacking in the males. Therefore I have not established a new genus for these two species, as it originally was my purpose to do.

This species I have received from Professor, Dr. Alfred C. Kinsey in a series of specimens from the type locality as well as from Texas, reared from *Cynips bella* Bassett var. on *Quercus grisea*, and from Alpine Texas from *Disholcaspis globulus* Fitch var. on *Q. grisea*.

2. *Glyphomerus stigma* (F).

Ashland, Oregon, *Diplolepis opaca* Kins. on *Rosa* sp. (Kinsey).

Mc. Cloud, California, *D. polita* Kins. on *Rosa* sp. (Kinsey).

3. *Megastigmus piceae* Rohwer.

1915, *Canad. Ent. v.* 47 p. 97, f. 13, ♀♂.

Of this species, which is very alike the European species of the *abietis*-group, but distinct from them, were bred 71 ♀ and 59 ♂ 4.—19. VI. 1929 from the seeds of *Abies arizonica* from Arizona. The seeds, producing this species, were received from the forest seed merchant Johs. Rafn of Copenhagen, among several hundreds of proofs from various parts of the world, for which I am this gentleman very much obliged.

4. *M. pinus* Parfitt.

1857, *The Zoologist v.* 15 p. 5543, ♀.

1913, Crosby, *Ann. Ent. Soc. Amer. v.* 6 p. 161, f. 4, ♂.

This species seems to be very common; my breedings are as follows (likewise from seeds received from Mr. Rafn):

Colorado, *Abies concolor* 1927—28, 1 ♀ 3. VII 1928.

Oregon, *A. grandis*. 1927—28, 3 ♂ 5.—24. I. 1929.

California, *A. concolor* 1928—29, 1 ♂ 9. VI. 1929 and 3 ♀ 8. II.—21. III. 1930.

Washington, *A. grandis* 1928—29, 2 ♀ 2 ♂ 4.—20. VI. 1929.

Oregon, *A. magnifica* 1928—29, 7 ♀ 4 ♂ 7.—22. VI. 1929 and 3 ♀ 1 ♂ 26. III.—28. IV. 1930.

Washington, *Picea sitkaensis* 1928—29, 1 ♂ 9. VI. 1929.

1 ♀ 22 ♂ were found by me in the windows of Rafn & Søn's warehouse in the years 1928 and 1929.

5. *M. pinus crosbyi* nov. var. ♀.

1913 Crosby, *Ann. Ent. Soc. Amer. v.* 6 p. 162, ♀.

The yellow ring around the eyes broader, and with an irregular band from the eyes, going behind the ocelli, interrupted in the middle. The yellow spot on the prothorax very large, only leaving back a smaller, irregular black margin in front and sides. Hind femur quite yellow, without a brown stripe on the outside.

Colorado, *Abies concolor* 1927—28, 1 ♀ 8. I. 1929
(*type*, in my collection).

Washington, *A. concolor* 1928—29, 1 ♀ 29. V. 1929.

26 ♀ were found in the windows of Rafn & Søn's ware house 1928. Crosby supposed, that this form was a new species, but as it is only little different from the species described by Parfitt, and as the male seems to be quite identical with the males of that species, and the two forms were bred from the same seeds, I can only establish it as a new variety.

6. *M. pinus marginatus* nov. var. ♂.

Differs from the ♂ of *M. pinus* by the coloration of the abdomen, which has the hind margins of the dorsal segments brown and the lateral margins of the dorsal segments and the hind margins of the ventral segments slight brown.

Oregon, *Abies grandis* 1927—28, 1 ♂ 26. XII. 1928
(*type*, in my collection).

7. *M. rafni* Hffmr. Fig. 3, ♂.

1929, Ent. Medd. v. 16 p. 331, 7, f. 13, ♀.

Head yellow with a small black ring on the occiput. Eyes red, ocelli also, fine black surrounded. Antennæ with

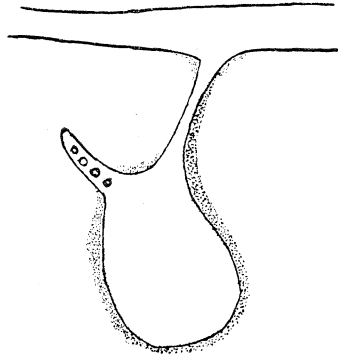


Fig. 3. *Megastigmus rafni* Hffmr. ♂ Radial knob.

scape yellow and flagellum brownish yellow. Pronotum yellow with a backwards pointed black spot in front. The back of the pronotum faint greenish. Mesonotum in front broadly

black, behind yellowish, on the border of the black color faint brownish. Parapsidal furrows in front finely black. Scutellum yellow, near the middle with a fine black cross line. Axillæ yellow, on the outside broadly black, the furrow between scutellum and axillæ black behind. Metanotum and propodeum yellow and black colored. The sides and underside of the thorax as well as the legs quite yellow. Top of head and thorax with long hairs. Wings hyaline, subcostal vein brown, the other veins yellowish, radial knob brownish black and oval. Abdomen yellow, the 4 first segments broadly black on the hind margin. Length of body 2,8—3,5 mm.

1 ♀ 43 of this nice species were found in the windows of Rafn & Søn's ware house in the summer 1929.

Colorado, *Abies concolor* 1927—28, 3 ♀ 1 ♂ 6.—24. X. 1929, besides the type material.

California, *A. concolor* 1928—29, 1 ♂ 29. IV. 1929.

Colorado, *A. concolor* 1928—29. 9 ♀ 1 ♂ 14.—23. VII. 1929.

8. *M. spermotrophus* Wachtl.

1893, Wien. Ent. Zeit. v. 12 p. 24 f. 1—3, ♀ ♂.

Colorado, *Abies concolor* 1927—28, 5 ♀ 4 ♂ 17.—22. I. 1929 and 1 ♂ 3. IX. 1929.

Oregon, *A. grandis* 1927—28, 5 ♀ 6 ♂ 10.—26. I. 1929 and 2 ♀ 1 ♂ 20. VII.—8. IX. 1929.

Washington, *A. grandis* 1928—29, 3 ♂ 20.—22. VI. 1929.

Oregon, *A. magnifica* 1928—29, 1 ♂ 27. VI. 1929 and 1 ♂ 26. III. 1930.

Washington, *Pseudotsuga Douglasii* 1928—29, 43 ♀ 31 ♂ 4.—17. VI. 1929 and 7 ♀ 3 ♂ 21. III.—19. IV. 1930.

British Columbia, *P. Douglasii* 1928—29 11 ♀ 1 ♂ 14.—17. VI. 1929.

The three species, *M. pinus*, *M. rafni* and *M. spermotrophus*, emerge in three times, in the summer of the first year, in the following winter by room temperature, and in a smaller number in the next summer.

9. *M. spermotrophus canadensis* nov. var.

♀. Head quite honey yellow with exception of the occiput. Thorax more uniform brown as in *M. spermotrophus*, propodeum more or less black. The first abdominal segments with dark hind margins. Ovipositor as long as abdomen with $\frac{2}{5}$ of the thorax. Otherwise as in *M. spermotrophus*. Length of body 2,1—2,3 mm, length of ovipositor 1,3—1,4 mm.

♂. As the ♀, length of body 2,0—2,4 mm.

Of this variety, which can only be distinguished by the shorter ovipositor and the smaller size, I have bred 7 ♀ and 2 ♂ from the seeds of *Tsuga canadensis* from Canada 22. VI.—9.VII. 1929 and 3 ♀ from the seeds of *Abies amabilis* from Washington 20.—27. VI. 1929.

10. *M. tsugae* Crosby.

1913, Ann. Ent. Soc. Amer. v. 6 p. 162, f. 5, ♀.

Washington, *Abies amabilis* 1928—29, 3 ♀ 20.—27. VI. 1929.

Haslev, 29. IV. 1930.
