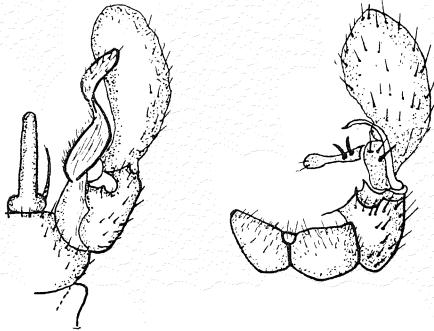


A new species of Craneflies from Denmark
***Limonia (Dicranomyia) esbeni* n. sp.**
(Dipt. Tipul.).

By
Peder Nielsen, Silkeborg.

Limonia (Dicranomyia) esbeni n. sp. ♂ general colour yellowish brown. Head dark brown, on each side yellowish brown, greyish pruinose. Rostrum pale yellow. 1st joint of palpi and base of 2nd joint pale yellow, the following joints blackish-brown. Antennae dark brown with short hairs, the scape of the same colour as the flagellum. Pronotum brown with a dark brown line in the middle. Thorax yellowish-brown. Praescutum dark brown with indistinct stripes, ochreous pruinose. Scutellum and postnotum dark brown. Abdominal tergites dark brown, the sternites pale yellow. Halteres pale yellowish at the base and with blackish knob. Hypopygium (see fig.) large and complex. Legs pale brown. Wings hyaline without spots, yellowish tinged, the veins dark brown; *m-cu* a little



Hypopygium of *Limonia (Dicranomyia) esbeni* n. sp. ♂. Ventral (left) and dorsal (right).

before the base of discal cell. *Sc* ends in *C* opposite the origin of *Rs*, *Sc*₂ a little before *Rs*, pterostigma faint; winglength 6.5 mm.

♀ as the male, only the abdomen more greyish pruinose and the tergites with a distinct darkbrown middle-line.

I only know a male and a female found at Lerkenfeld, Jutland, 31. VII. 1917 by P. Esben-Petersen.

The species is closely allied to the group of *Dicranomyia* with swollen hypopygium as *complicata* de Meij., *stigmatica* Meig., *magnicauda* Lundstr. a. o. but it can easily be distinguished from these species; especially the structure of the 9th tergite gives a good indication.

Type in the author's collection.

The species is named in honour of the collector, the wellknown neuropterologist Dr. P. Esben-Petersen.
